

# Rose Lore

written by Members, for Members of the  
**Mesa East Valley Rose Society**  
Affiliated with the American Rose Society

Judy Sweador, editor

[www.roses4az-mevrs.org](http://www.roses4az-mevrs.org)

April 2011

One of the first blooms of the season found in phase 4 of the rose garden.

**SUNSTRUCK**



Monthly Meeting: Mesa Community College (FREE PARKING!)

**Elsner Library—Community Room**

**1833 West Southern Ave. Mesa, AZ 85202**

**Thursday, April 14, 2011**

**7pm Program:**

**Mike Jepsen, Agriculture Consultant and Rosarian will present on an organic product line from ViTech Industries. These products feed the soil stimulating microbiologic growth and foliar feed the plant giving benefits of improved health and vigor and accelerating flowering buds. Check out his article in this month's newsletter**



**April is the month to enjoy the fruit of your labor! Your Rose Bushes should be presenting you with a garden full of color, begging you to walk among them and “smell the roses”. Enjoy. Take a picture or two ready to enter into a rose photography competition.**

**Our pruning at the MCC Rose Garden this year and our Rose Auction proved the theory that if we can get good publicity we will get the public to attend. Getting the word out is what will keep us alive and healthy. If you have any ideas or have an inclination to talk with people, I would like to hear from you, you may have an idea we have not tried, or are able to put a different spin on a subject to create interest. No idea is a bad idea!**

**Many of you, as I did, planted new rose bushes this year. It is very tempting to cut the first blooms and take them into the house and share with friends. You can do this, but I ask that you consider the health of your bush first. The more leaf you leave on the bush, the better the bush will survive the summer, and as the bush is still young, it will need all the leaf it has. By all means take the flower into the house, but only on a short stem or just float the bloom in a bowl.**

**I almost lost one of my new roses. It was coming along great and had a new bud on it about to open. It needed staking. But this was not the cause of nearly losing it. One of the other stems was completely stripped of leaves and other leaves on the bush were covered with a WEB. Yes, Spider Mite in mid March. I surely was not expecting to find them turn up so early in the season. I am now washing that bush every 3 days and this past weekend I started my spring routine of washing off all my rose bushes every week. I will keep this up until we get into the real hot weather, probably June.**

**April is the month for Rose Shows. If you have never been to one then you should at least make it to one. Scottsdale April 9<sup>th</sup> and Phoenix April 16<sup>th</sup>. If you have never exhibited, I encourage you to bring a bloom or two, we will have an experienced exhibitor show you how to enter your bloom – you may well win a ribbon. If you want some tips on selecting a good bloom, give me a call.**

**We are coming up to election time for the officers of the board. We are always interested in having someone new join us and provide a different perspective. If you are interested in running for the board, please speak to a member of the nominating committee, Jan Blanco 480-839-1356, Steve Pawlowski 480-522-0318 or Lynn Urry 480-981-7763. We will have confirmation of the nominations and / or elections during our April meeting.**

**Steve Sheard**



## April Rose Care

**April is a colorful and exciting month in our rose gardens as we watch our roses burst into bloom. It's also a month of rose shows in the area so I invite you to pick a few blooms and enter them in an upcoming rose show.**

**Unfortunately springtime also brings infestations of thrips and aphids that cause buds to not open properly and brown edges to appear on the petals. See March rose care for insect and fungicide products to use in your garden.**

**Spider mites may also appear in your garden . If you see grayish leaves and webs on the underside of the leaves wash your roses with a strong blast of water with a water wand. Continue to do this several days to break their cycle. If water doesn't control the mites you can use an insecticide such as Foramite. Rosemania carries this product.**

**Continue your fertilization program and use Fish Emulsion to help intensify the color in your blooms. Remember: Always water before and after you fertilize to prevent root burn.**

**To keep your garden looking its best, remove the dying blossoms often. The spent blooms should be removed high on the stem so that the rose will have sufficient foliage left on the plant to shade the canes during the summer months.**

**Adjust your irrigation as the temperatures increase so your roses receive adequate water. With proper drainage you cannot over water.**

**I am sure you will want your roses to remain fresh for as long as possible as you pick them for friends or to enjoy in your own home. When you cut a stem from a bush, an air bubble will lodge in the stem and not allow it to take up water. Keep a bucket of clean water with you as you cut your blooms and submerge each freshly cut stem in the water and make a new cut under the water. Now the stem has only taken up water and your blooms will last longer.**

**This is a great time to get your camera out and capture those beautiful blooms in your garden. I find early morning or late evening is the best time to get the proper lighting.**

**It's a great opportunity to enter your rose photos in the photography show at the upcoming rose shows.**

**Rose pictured: Heart of Gold**





## Tool Tips by Cindy Jepsen

**I thought it best to revisit the water wand this month because of the value**



**Water Wand**

**it brings to all rose enthusiasts. This is absolutely the best non-chemical method of pest control you can use on your roses! It is inexpensive, environmentally safe, easy to use, and effective for the organic prevention and removal of aphids, spider mites, and**

**powdery mildew.**

**You will need a water wand and an adjustable hose-end nozzle. Both are available at any hardware store or gardening center; the water wand will cost about \$10 -\$15 and the nozzle about \$5.00.**



**Remove the shower nozzle from the water wand and replace it with a solid brass adjustable hose-end nozzle. Adjust the nozzle for a 15-20-degree spray.**



**If your water wand does not come with a shut-off valve, you should invest in one. Dramm makes a heavy-duty one that will last years, available at hardware stores for about 13.**

**Turn the water on full blast; you want to use a high-pressure spray, not a sprinkle. Remember...you are dislodging the pests from the bush, not refreshing them with a shower! The angled upper head of the water wand allows you to direct the spray upward from under the bush in order to remove pests that are under neath the foliage, like spider mites. Therefore, you want to spray the bush from both the under side and from above for all pests and mildew.**

**You should do this several times a week during heavy pest season. For powdery mildew, you need to be pro-active and wash the spores off before you even see the mildew. Once you get mildew, you can wash if off, but you need to do this every day and it's a very slow process once the mildew takes hold.**

**NOTE: Do not throw that shower nozzle away!**

**It is great for putting on the end of your hose**

# Product Guide for Roses

by Mike Jepsen



## The ViTech Story

**This months article is about a variety of products that I have been using in the rose garden since 1997. The company that supplies the products is ViTech Industries. ViTech sells their products to farmers and is applied to large acreage. They allowed me to try their products in a small garden setting. This article is an introduction to our April 14th MEVRS program where I will go more in depth and will have time to answer questions on the use of these products.**

**ViTech products work in two ways. First, by rebuilding the biological health of the soil and second, by foliar fertilizing to aid in plant nutrition.**

**The soil builder is called ViBasic and is designed to stimulate microbiologic growth which gives the following benefits:**

- **Aerates the soil**
- **Increases water penetration and retention**
- **Buffers salts**
- **Encourages root growth**
- **Stimulates biological humus development**

**There are two foliar nutrient formulations:**

**1. Vigorator (12-8-4) which gives the following benefits:**

- **Stimulates root growth**
- **Improves plant health & vigor**
- **Leaf friendly to ensure uptake and translocation**
- **Reduces leaf burn and phytotoxicity**

**2. ViBurst (4-14-2) which gives the following benefits:**

- **Provides energy for uniform bloom**
- **Accelerates emergence of flowering buds**

**The above three products are what I started with 14 years ago. Since then other products and formulations have been added to my arsenal to grow better roses.**

**To hear a more complete story, come to the MEVRS April 14th meeting.**

## Musing from the Rose Garden

*by Mickey Kundrat, Volunteer Coordinator*



**The Rose Garden is starting to show the results of our volunteers hard labor during our January/February pruning season . A special thanks to all who helped make this happen. Thanks & a safe trip home goes out to all of our winter visitor volunteers. We look forward to seeing you in the garden again, before the snow flies next fall/winter.**

**Don't forget to come out to the garden & smell the roses !**



This rose is called Pompon de Paris, a climbing china which was introduced in 1839. This rose blooms only once a year and is just starting to bloom in the Rose Garden at MCC. It is located in Phase 4.

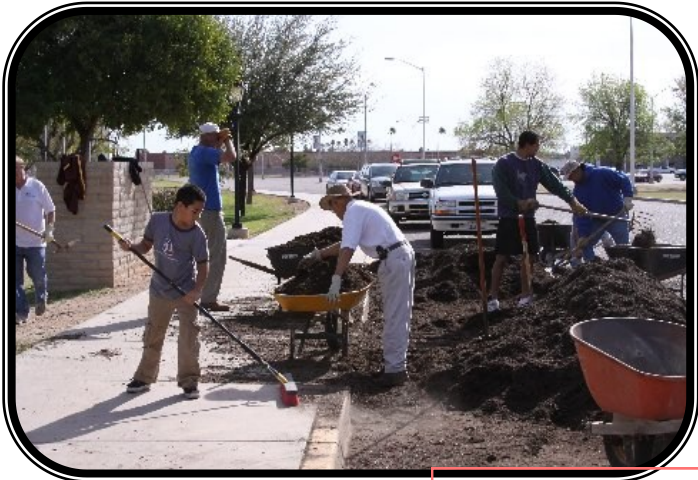




***Dueling Wheel Barrels***  
***LeRoy Brady & Lynn Twitchell***



**COMPOSTING CREW**  
**Back row: Lynn Twitchell, Shirley Loverin, Phyllis Henslin, Jack Twitchell, Jimmy Tribbey**  
**Front row: Paul Loverin, Christian Ampran**



**Man power getting the job done!**

**Let's go have lunch.**



**Mary and Bill Lum  
and Lois and Don Downin**



**Fabulous box lunches were served at the Garden Party.**



**Items on the raffle table for the "End of Pruning Party" in the MCC Rose Garden**



**MEVRS WANTS YOU!!!!**

**It's time again to elect officers for the 2011-12 year. This time we have the following positions open:**

**First Vice-President -- In the absence of the President, the First Vice-President will perform the duties of the President and shall be Program Chairman for regularly scheduled meetings.**

**Second Vice-President -- Maintains membership rolls, issues membership cards and collects dues.**

**Treasurer -- Receives and deposits all funds in Society account, pays all bills, keeps accurate record of income and expenditures.**

**Corresponding Secretary -- Responsible for all correspondence for the Society.**

**Recording Secretary -- Keep minutes of Society and Board of Director Meetings and other duties as assigned by President.**

### **LIBRARY NEWS**

**Please consider donating a book or two to our lending library. Books are very beneficial to our newest members so we ask that you take a look at what we have and if you think of a book you would like to see in the library please consider**

**donating it to our library.**

**Please check with Linda Ahlborn for additional information.**

**Thank you for supporting this endeavor.**

**MEMBERSHIP  
DISCOUNTS**

**The following nurseries will give MEVRS members a 10% discount (unless otherwise indicated) on any rose-related purchase when you show your membership card.**

**In some stores you must pay by cash or check**

**only to receive the discount.**

**Be sure to get your annual Membership Card from the Membership Chairman.**

**A & P Nurseries (15%)**

**Four Valley Locations**

**Gilbert, Mesa (2), Queen Creek**

**Berridge Nursery**

**4647 E. Camelback Rd Phx**

**Potted roses always in stock!**

**Gardener's World**

**3401 E. Baseline Rd., Phx**

**Harper's Nursery**

**Three locations:**

**Mesa, Scottsdale and Phx**

**480-964-4909 (Mesa)**

**Potted roses still in stock**

**Treeland Nursery**

**2900 S. Country Club Dr., Mesa**

**480-497-2525**

**When you patronize**

**these businesses, please thank the manager for supporting the**

**MEVRS!**

## Mesa East Valley Rose Society

### Standing Monthly Activities

2<sup>nd</sup> Thursdays—7 p.m. General Meetings

3<sup>rd</sup> Saturdays—8 a.m. Rose Garden  
volunteers work

Jan & Feb ALL Saturdays MCC Garden

Pruning

### Activities 2011

Apr 9 Scottsdale Rose Show

Apr 14 MEVRS Officer Election

Apr 16 Phoenix Rose Show

Apr 23 Pacific Rose Show

Apr 30 San Diego Rose Show

May 7 Coastal Rose Show

May 12 MEVRS picnic/ Officer

Installation

Oct 13-16, 2011 Fall National Convention

Los Angeles Tinseltown Rose Society

Nov 13 MEVRS Rose Tour

### National Events

June, 2011 Nat'l Convention & Rose Show,  
Winston-Salem

The Fall National in LA ,2011 will also be  
the Pacific Southwest Convention and  
District Meeting

*Thanks to Mickey Kundrat and  
Phyllis Henslin for their wonderful  
pictures*

**Mesa-East Valley Rose  
Society**

**Executive Officers**

<b>President</b>	<b>Steve Sheard</b>
<b>1st Vice President</b>	<b>Cindy Jepsen</b>
<b>2nd Vice-President</b>	<b>Angela Hilton</b>
<b>Recording Secretary</b>	<b>Vincent Quarles</b>
<b>Corresponding Secretary</b>	<b>Phyllis Henslin</b>
<b>Treasurer</b>	<b>Jan Blanco</b>
<b>Past-President</b>	<b>LeRoy Brady</b>

**Board of Directors**

**Steve Pawlowski**  
**Ryan Regehr**  
**Jimmy Tribby**  
**Lynn Twitchell**  
**Lynn Urry**

**Standing Committees**

<b>Auction Chairman.....</b>	<b>Ryan Regehr</b>	<b>480-518-1529</b>
<b>Communications.....</b>	<b>Cindy Jepsen</b>	<b>480-921-0231</b>
<b>Historian.....</b>	<b>Open</b>	
<b>Hospitality.....</b>	<b>Sally Crofford</b>	<b>480-838-9497</b>
<b>Librarian.....</b>	<b>Linda Ahlborn</b>	<b>480-695-5891</b>
<b>Membership ....</b>	<b>Angela Hilton.</b>	<b>480-786-3383</b>
<b>Newsletter Editor.....</b>	<b>Judy Sweador</b>	<b>480-969-5490</b>
<b>Member Emails.....</b>	<b>Linda Ahlborn</b>	<b>480-695-5891</b>
<b>MCC Test Garden.....</b>	<b>LeRoy Brady</b>	<b>480-962-9603</b>
	<b>Marylou Coffman</b>	<b>480-926-3064</b>
	<b>Lynn Twitchell</b>	<b>480-503-4508</b>
<b>Pioneer Park Rose Garden Coordinator</b>		
	<b>Jean Pegler</b>	<b>480-969-9391</b>
<b>Publicity.....</b>	<b>.Open</b>	
<b>Rose Garden Volunteers.....</b>	<b>Mickey Kundrat</b>	<b>602-359-8528</b>
<b>Rose Show Chairman.....</b>	<b>Lynn Twitchell</b>	<b>480-503-4508</b>
<b>Ways &amp; Means.....</b>	<b>Mike Jepsen</b>	<b>602-312-1813</b>

# Mesa–East Valley Rose Society Membership

Annual family or individual membership in the MEVRS are \$25. Annual dues are payable by June 1. No discounts for late payments. Payments in cash or check at a meeting; or by check to this address:

MEVRS/Membership, P.O. Box 40394, Mesa, AZ 85274-0394

Date \_\_\_\_\_ New \_\_\_\_\_ \*Gift\* \_\_\_\_\_ Renewal \_\_\_\_\_ Amount Paid \_\_\_\_\_

Cash \_\_\_\_\_ Check# \_\_\_\_\_

Names: \_\_\_\_\_

Address \_\_\_\_\_

City \_\_\_\_\_ State \_\_\_\_\_ Zip \_\_\_\_\_

## WEB Pages of Interest

Mesa-East Valley Rose  
Society

[www.roses4az-mevrs.org](http://www.roses4az-mevrs.org)

OR

<http://www.roses4az-mevrs.org/site/home.html>

Find past newsletters or articles by clicking on the "Newsletters" or "Articles" tabs on the Home page.

MCC Rose Garden

[www.rosegardenatmcc.org](http://www.rosegardenatmcc.org)

Help Me Find Roses

[www.helpmefind.com/rose](http://www.helpmefind.com/rose)



## Annual Membership Dues

are due for the year of

June 1, 2010 thru May 31, 2011

*(NO discounts for late payments!)*

Please give your annual \$25 dues at the next meeting to the Treasurer.

OR

Mail a check payable to MEVRS

To MEVRS, Attn: Treasurer

P.O. Box 40394

Mesa, AZ 85274-0394

***NOTE: Annual dues include our Rose Lore Newsletter by email.***

***Annual fee to receive a monthly hard copy by mail is an additional \$15.***

## CONSULTING ROSARIANS

<b>Arveda Larson* (Scottsdale)</b>	<b>602-953-3832</b>
<b>Cheryl Doan</b>	<b>480-838-4062</b>
<b>Dave* &amp; Gerry* Mahoney (GIndl/Peoria)</b>	<b>623-581-3756</b>
<b>Donna Dibble (East Mesa)</b>	<b>480-380-4592</b>
<b>Helen Baird* (NoPhx, Sctsdle)</b>	<b>602-953-9133</b>
<b>Jeannie Cochell (NE Valley—jcochell@cox.net)</b>	<b>602-363-6444</b>
<b>John F. Green (Tucson)</b>	<b>520-795-2964</b>
<b>Ken &amp; Peggy Jones (West Phoenix)</b>	<b>623-931-5004</b>
<b>Larry Bell* (Ahwatukee Foothills)</b>	<b>480-706-9667</b>
<b>LeRoy Brady* (Mesa)</b>	<b>480-962-9603</b>
<b>Liz Strong (Tucson)</b>	<b>520-797-7890</b>
<b>Lynn Twitchell</b>	<b>480-202-4215</b>
<b>Marylou Coffman** (Gilbert)</b>	<b>480-926-3064</b>
<b>Mike &amp; Cindy Jepsen (Tempe)</b>	<b>602-312-1813</b>
<b>Mickey Kundrat</b>	<b>602-359-8528</b>
<b>Millie Hisey* (Apache Jct-winter)</b>	<b>480-474-9139</b>
<b>Nelson Mitchell* (Peoria)</b>	<b>623-412-1586</b>
<b>Phyllis &amp; Bill Henslin (Mesa, Apache Jct)</b>	<b>480-807-3592</b>
<b>Royetta Marconi-Dooley</b>	<b>480-802-9914</b>
<b>Ryan Regehr (Chandler, Gilbert)</b>	<b>480-518-1529</b>
<b>Steve Sheard (Tempe, Chandler)</b>	<b>480-831-2609</b>
<b>Terry Schick (Flagstaff)</b>	<b>928-853-0653</b>
<b>Terry Swartz* (Tucson)</b>	<b>520-623-8285</b>
<b>Terry* &amp; Heidi* Leavitt (Phoenix)</b>	<b>602-971-0179</b>

\*ARS Judge    \*\*ARS PSWD Chair of Arrangement Judges

## *Rare Fruit Growers*

### **Spring Plant Sale**



**Saturday April 23<sup>rd</sup>**

**9:00am to Noon**

***U of A Cooperative Extension,***

***4341 E. Broadway Rd,***

**Phoenix.**

**Lots of interesting plants to buy, and lots of good advice about how to grow fruiting plants and what varieties do best here in the desert.**

**Papayas, Mangoes, Bananas, Loquats, Avocados, and many other kinds of plants. Come to browse, buy, or just chat about plants.**

**For more information contact Steve Sheard 480 831 2609.**

Meetings are held at 7:00 pm on the 2nd Thursday  
of each month at  
**Mesa Community College:**  
*Elsner Library Community Room, 1st  
floor*

1833 W. Southern Ave., Mesa, AZ  
NEXT MEETING

Thursday , April 14, 2011

**NOMINATIONS AND /OR ELECTIONS OF  
OFFICERS**

***All articles for the newsletter MUST be  
submitted to the editor by the 25th of each  
month.***

***Rosaiarns, we could use all articles of  
interest.***

**WEB Pages of Interest**

**Mesa-East Valley Rose Society**

***www.roses4az-mevrs.org***

OR

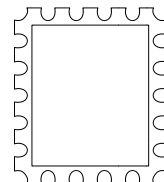
***http://www.roses4az-  
mevrs.org/site/home.html***

Find past newsletters or articles by  
clicking on the "Newsletters" or  
"Articles" tabs on the Home page.

**MCC Rose Garden**  
***www.rosegardenatmcc.org***

## Rose Lore

Judy Sweador, Editor  
Mesa-East Valley Rose Society Inc.  
PO Box 40394  
Mesa, AZ 85274-0394



***Developers of  
The Rose Garden at Mesa Community College,  
the largest public rose garden in  
the Desert Southwest!***