

ROSE LORE

*Written by members, for members of the
Mesa East Valley Rose Society*

Judy Sweador, editor

www.roses4az-mevrs.

June, 2011

MEVRS 2011 OFFICERS



From left to right--- Back row first Linda Ahlborn, Jean Urry, Leroy Brady, Lynn Twitchell, Bill Henslin, Michael Levitt,
Front row— Lynn Urry, Steve Sheard, Vincent Quarles

Monthly Meeting: Mesa Community College (FREE PARKING)

Elsner Library—Community Room

1833 West Southern Ave. Mesa, AZ 85202

NEXT MEETING THURSDAY JUNE 9, 2011

Program: Voting for revised bylaws. Please print out your copy and bring with you to the meeting. Changes are indicated in red. We need your input and vote!

Our National
Floral Emblem



- President** Steve Sheard
- 1st Vice President** Lynn Urry
- 2nd Vice-President** Vincent Quarles
- Recording Secretary** Carol Hurlbut
- Corresponding Secretary** Michael Levitt
- Treasurer** Jean Urry
- Past-President** LeRoy Brady



Board of Directors

- Lynn Twitchell
- Jimmy Tribby
- Bill Henslin
- Linda Alhorn

Standing Committees

- Auction Chairman.....Ryan Regehr 480-518-529**
- Communications..... Cindy Jepsen 480-921-0231**
- Historian..... Open**
- Hospitality..... Sally Crofford 480-838-9497**
- Librarian Linda Ahlborn 480-695-5891**
- Membership Angela Hilton. 480-786-3383**
- Newsletter Editor..... Judy Sweador 480-969-5490**
- Member Emails..... Linda Ahlborn 480-695-5891**
- MCC Test Garden..... LeRoy Brady 480-962-9603**
- Marylou Coffman 480-926-3064**
- Lynn Twitchell 480-503-4508**
- Pioneer Park Rose Garden Coordinator**
- Jean Pegler 480-969-9391**
- Publicity Open**
- Rose Garden Volunteers.....Mickey Kundrat 602-359-8528**
- Rose Show Chairman.....Lynn Twitchell 480-503-4508**
- Ways & Means.Mike Jepsen 602-312-1813**



Presidents Message

June 2011

May was the end of spring! The temperatures jumped 20 degrees in a week! I sincerely hope you remembered to up your watering before your bushes were stressed. If your bushes start to loose leaves at this time of year it is very unlikely to be Over Watering, it is probably under watering.

The Powdery Mildew has gone BUT we still have Spider Mite. I just noticed they have got a strong hold on one of my bushes that has never had it before, so keep your eyes out for them. Wash your bushes once a week as a preventative measure.

Cutting roses for the house is still a good idea, as it helps with “Dead Heading” but remember to keep the stems short as the bush needs as many leaves as possible for the summer heat. Your blooms will be a little smaller but they are still worth putting into arrangements.

A special Thank You to Jared Langkilde for officiating at our last meeting and installing the Board for this next year. My second term has started with me needing to look for more support from our Board and from our membership, my work at On Semiconductor is going to keep me on the road quite a bit this next year. I will be missing the June meeting (Not for work, Sue & I will be on a cruise in the Mediterranean). I am always available by email as I do manage to connect almost every day.

Blue Roses – Sorry, no answer to this. But I can help with a little BLUE in the garden. I have included a few pictures from my yard.

Plumbago Flowers





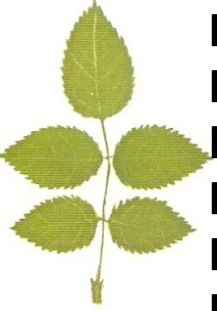
Plumbago Bush



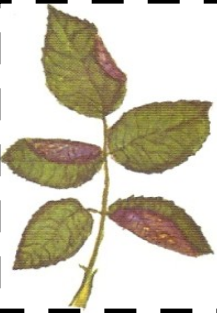
Clematis Flower



Nutrient Deficiency in Roses – The Major Nutrients



Nitrogen Deficiency: leaves of nitrogen-deficient plants tend to show an overall yellow-green color. The older leaves are more affected than the young growth and under severe cases may turn completely yellow and drop. Leaves are generally stunted and the node length between leaves along with stem diameter is reduced. Flowers of dark colored varieties may be lighter in color than normal.



Phosphorus Deficiency: the first symptom of this deficiency is an overall stunting of leaves and shoot growth. Later the older leaves may become a gray-green in color and drop off without turning yellow first. Root development is reduced which results in poor flower production and slow development of buds. A slight purpling of the underside of the leaves may also occur.



Potassium Deficiency: Plants deficient in potassium tend to show stunted growth. Flower stems are shorter than normal. The flower buds are usually small, short and can be deformed. The margins of the leaf become yellow, then turn brown and sometimes turn purple. Young growth shoots become hardened and stunted.

Next month's article will be on the secondary elements: calcium, magnesium, and sulfur.

ROSE CARE CORNER for June

by Phyllis Henslin, Consulting Rosarian



June Rose Care

The month of May is now behind us, along with those cooler temperatures that everyone enjoyed. The cool temps gave the roses a chance to put out another nice bloom cycle. However, there are some basic things to do to make sure your roses continue to flourish through the extreme heat of our summer months.

Rose care during the summer is really pretty easy. Generally there is no need to spray with fungicides. However, spider mites are the one insect you must watch closely for. They love the heat of the summer and quickly multiply. They start low on the plant and suck the juice out of the rose leaves leaving them grayish looking. Loss of color is an early sign. An easy way to prevent or control spider mites is with the use of a water wand. Wash your roses off every 2 to 3 days.

A water wand allows you to get up under the leaves where the mites are feeding.

Remember: Don't just wash the spider mites off, BLAST them off with a strong stream of water from your water wand.

Feed your roses at $\frac{1}{2}$ the normal rate of fertilizer you use every 6 weeks.

I like to use an organic fertilizer to eliminate the risk of burning the roots. GroGanic and Milorganite are two popular organic fertilizers. To obtain GroGanic, give Mike Jepsen a call as he has it available to MEVRS members.

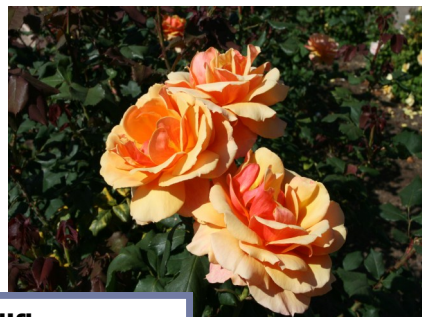
Milorganite can be found at Home Depot.

Water, Water, Water, Roses Love Water!

Make sure your watering system is in working order. Nothing will kill a rose faster than getting insufficient or no water at all. If you are growing roses in pots they may need to be watered daily as pots tend to dry out quickly.

During the monsoon season, never count on summer rains to supply the water needed by roses. I like to think of the monsoon rains as giving my roses extra water that will help push the salt buildup in the soil down away from the root zone. An occasional deep watering will also help eliminate salt buildup in the soil.

You will be rewarded with beautiful fall blooms by keeping your roses healthy through the summer months. Remember: Diseases, pests and irrigation problems never take a vacation.



About Face – Grandiflora rose

Helen Baird's entry featuring the rose "Nicole" was Best in the Judges class.



Bill Henslin's winning photo at the San Diego rose show.
The rose is called Peace



This rose, Nancy Reagan won the Fully open HT class and was shown by Linda Clark. This bloom was over 5 inches in diameter.
They sure do grow big roses in California

MEMBERSHIP

DISCOUNTS

The following nurseries will give MEVRS members a 10% discount (unless otherwise indicated) on any rose-related purchase when you show your membership card.

In some stores you must pay by cash or check

only to receive the discount.

Be sure to get your annual Membership Card from the Membership Chairman.

A & P Nurseries (15%)

Four Valley Locations

Gilbert, Mesa (2), Queen Creek

Berridge Nursery

4647 E. Camelback Rd Phx

Potted roses always in stock!

Gardener's World

3401 E. Baseline Rd., Phx

Harper's Nursery

Three locations:

Mesa, Scottsdale and Phx

480-964-4909 (Mesa)

Potted roses still in stock

Treeland Nursery

2900 S. Country Club Dr., Mesa

480-497-2525

When you patronize

these businesses, please thank the manager for supporting the

MEVRS!

Mesa East Valley Rose Society

Standing Monthly Activities

2nd Thursdays—7 p.m. General Meetings

3rd Saturdays—8 a.m. Rose Garden volunteers work

Jan & Feb ALL Saturdays MCC Garden

Pruning

Activities 2011

June 9 Regular MEVRS meeting

Oct 13-16, 2011 Fall National Convention

Los Angeles Tinseltown Rose Society

Nov 13 MEVRS Rose Tour

Nov.19 MEVRS Rose Show

National Events

June, 2011 Nat'l Convention & Rose Show, Winston-Salem

The Fall National in LA ,2011 will also be the Pacific Southwest Convention and District Meeting

CONSULTING ROSARIANS

Arveda Larson* (Scottsdale)	602-953-3832
Cheryl Doan	480-838-4062
Dave* & Gerry* Mahoney (GIndl/Peoria)	623-581-3756
Donna Dibble (East Mesa)	480-380-4592
Helen Baird* (NoPhx, Sctsdle)	602-953-9133
Jeannie Cochell (NE Valley—jcochell@cox.net)	602-363-6444
John F. Green (Tucson)	520-795-2964
Ken & Peggy Jones (West Phoenix)	623-931-5004
Larry Bell* (Ahwatukee Foothills)	480-706-9667
LeRoy Brady* (Mesa)	480-962-9603
Liz Strong (Tucson)	520-797-7890
Lynn Twitchell	480-202-4215
Marylou Coffman** (Gilbert)	480-926-3064
Mike & Cindy Jepsen (Tempe)	602-312-1813
Mickey Kundrat	602-359-8528
Millie Hisey* (Apache Jct-winter)	480-474-9139
Nelson Mitchell* (Peoria)	623-412-1586
Phyllis & Bill Henslin (Mesa, Apache Jct)	480-807-3592
Royetta Marconi-Dooley	480-802-9914
Ryan Regehr (Chandler, Gilbert)	480-518-1529
Steve Sheard (Tempe, Chandler)	480-831-2609
Terry Schick (Flagstaff)	928-853-0653
Terry Swartz* (Tucson)	520-623-8285
Terry* & Heidi* Leavitt (Phoenix)	602-971-0179

*ARS Judge **ARS PSWD Chair of Arrangement Judges

Mesa–East Valley Rose Society Membership

Annual family or individual membership in the MEVRS are \$25. Annual dues are payable by **June 1**. No discounts for late payments. Payments in cash or check at a meeting; or by check to this address:

MEVRS/Membership, P.O. Box 40394, Mesa, AZ 85274-0394

Date _____ New _____ ***Gift*** _____ Renewal _____ Amount Paid _____

Cash _____ Check# _____

Names: _____

Address _____

City _____ State _____ Zip _____

WEB Pages of Interest

**Mesa-East Valley Rose
Society**

www.roses4az-mevrs.org

OR

[http://www.roses4az-mevrs.org/site/
home.html](http://www.roses4az-mevrs.org/site/home.html)

Find past newsletters or articles by clicking on the “Newsletters” or “Articles” tabs on the Home page.

**MCC Rose Garden
www.rosegardenatmcc.org
Help Me Find Roses
www.helpmefind.com/rose**



Annual Membership Dues

are due for the year of

June 1, 2010 thru May 31, 2011

(NO discounts for late payments!)

Please give your annual \$25 dues at the next meeting to the Treasurer.

OR

Mail a check payable to MEVRS

To MEVRS, Attn: Treasurer

P.O. Box 40394

Mesa, AZ 85274-0394

NOTE: Annual dues include our Rose Lore Newsletter by email.

Annual fee to receive a monthly hard copy by mail is an additional \$15.

Zone Finder

enter: <http://www.garden.org/zipzone/>

enter your zip: in the dialog box

The zone finder returns your zone

(example)

- Zone: 9A
- City: PHOENIX
- State: AZ

Press Release

American Rose Society to Hold Its National Convention in Los Angeles For the First Time in Over 50 Years

A weekend event filled with lectures by expert Guest Speakers and Authors, Garden Tours, and the National Rose Show

The American Rose Society is an American institution, celebrating 119 years as an educational and community service organization, and has over 350 affiliated and chapter societies spread across the United States. The ARS 2011 Fall National Convention and Rose Show will be held at the Hilton Universal, in Universal City, Thursday - Sunday, October 13-16, 2011. The convention schedule includes a full day of entertaining and informative lectures by rose experts, Garden Tours and sightseeing tours around Los Angeles, two sumptuous buffet Awards Banquets at the Hilton Universal, as well as the ARS National Rose Show, which will feature exquisite rose blooms and arrangements exhibited in an evening competition to rival any glamorous Hollywood event.

The local host society is the Los Angeles Tinseltown Rose Society, which has been a community organization since 1964. Convention attendees are expected from across the United States, as well as a large international contingent, who are looking forward to this rare opportunity to attend an ARS convention in such an ideal location as Los Angeles. This convention has been years in the planning, and the members of the Los Angeles Tinseltown Rose Society wish to welcome one and all, rose expert and novice, to attend this very special event.

“So many roses have been named for celebrities through the years, that it was a natural tie in for our theme of ‘Rose Stars,’” notes Marcia Sanchez-Walsh, the Convention Chair and President of the Los Angeles Tinseltown Rose Society. Not only will there be horticultural exhibits of roses, but a popular part of any rose show is the Rose Arrangements division of the competition, which will use movie titles as inspiration in each category. The third division in the Rose Show is Rose Photography, which is a developing area for the ARS, and with this National show in Los Angeles, they are certain there will be many great entries in this area.

The Program of Events for the entire four-day Convention is listed on their website at www.RoseStars.com. Convention Day Passes may be purchased separately for the Lecture Day, or the Garden Tour Day, or an All Convention Pass is most economical. Entry to view the National Rose Show on Friday, October 14th from 8:00 am to 6:00 pm is free to the general public. It is a great, once-in-a-lifetime event for Los Angeles, and the programs will be of interest to a wide range of rose and gardening enthusiasts. Convention tickets are on sale now.

CONTACT INFORMATION:

Marcia Sanchez-Walsh, Convention Chair and President, Los Angeles Tinseltown Rose Society

(818) 395-0840, E-Mail: LosAngelesTinseltownRS@gmail.com

Website: RoseStars.com

Meetings are held at 7:00 pm on the 2nd Thursday
of each month at
Mesa Community College:
*Elsner Library Community Room, 1st
floor*

1833 W. Southern Ave., Mesa, AZ
NEXT MEETING
Voting on revised bylaws

***All articles for the newsletter MUST be
submitted to the editor by the 25th of each
month.***

***Rosaiams, we could use all articles of
interest.***

WEB Pages of Interest

Mesa-East Valley Rose Society

www.roses4az-mevrs.org

OR

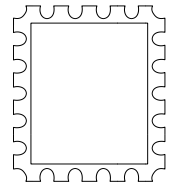
**[http://www.roses4az-
mevrs.org/site/home.html](http://www.roses4az-mevrs.org/site/home.html)**

Find past newsletters or articles by
clicking on the "[Newsletters](#)" or
"[Articles](#)" tabs on the Home page.

MCC Rose Garden

Rose Lore

Judy Sweador, Editor
Mesa-East Valley Rose Society Inc.
PO Box 40394
Mesa, AZ 85274-0394



***Developers of
The Rose Garden at Mesa Community College,
the largest public rose garden in
the Desert Southwest!***