

ROSE LORE

*Written by members, for members of the
Mesa East Valley Rose Society*

Judy Sweador, editor

www.roses4az-mevrs.

September, 2011



MCC Garden representing the five branches of our Military. Thanks to all past and present Service Members.

Please take the time to remember all who gave especially on 9-11.

Monthly Meeting: Mesa Community College (FREE PARKING)

Elsner Library—Community Room

1833 West Southern Ave. Mesa, AZ 85202

NEXT MEETING THURSDAY September 8, 2011 at 7p.m.

Steve Sheard will give a presentation on:

Grow you own rose bush from seed. A hand's on meeting working with Rose Hips/seeds.

The meeting will cover

- ◆ Selecting parent bushes***
- ◆ Preparing flowers***
- ◆ Pollinating***
- ◆ Harvesting Hips-hands on harvesting of seeds***

*Our National
Floral Emblem*



- | | |
|--------------------------------|------------------------|
| President | Steve Sheard |
| 1st Vice President | Lynn Urry |
| 2nd Vice-President | Vincent Quarles |
| Recording Secretary | Carol Hurlbut |
| Corresponding Secretary | Michael Levitt |
| Treasurer | Jean Urry |
| Past-President | LeRoy Brady |



Board of Directors

- Lynn Twitchell**
Jimmy Tribby
Bill Henslin
Linda Ahlborn

Standing Committees

Auction Chairman.....	Ryan Regehr	480-518-1529
Communications.....	Open	
Historian.....	Open	
Hospitality	Sally Crofford	480-838-9497
Librarian	Linda Ahlborn	480-695-5891
Membership	Vincent Quarles	480-786-3383
Newsletter Editor.....	Judy Sweador	480-969-5490
Member Emails.....	Linda Ahlborn	480-695-5891
MCC Test Garden.....	LeRoy Brady	480-962-9603
	Marylou Coffman	480-926-3064
	Lynn Twitchell	480-503-4508
Pioneer Park Rose Garden Coordinator		
	Jean Pegler	480-969-9391
Publicity.....	Open	
Rose Garden Volunteers.....	Open	
Rose Show Chairman.....	Mary Lou Coffman &...	480-926-3064
	Phyllis Henslin	480-807-3592
Ways & Means	Mike Jepsen	602-312-1813
Web Site.....	Corinne Geertsen	480-649-9822



These last few days have been part of our worst summer ever. Needless to say I have lost more than a few plants. So this month it is “Do as I say – NOT – Do as I do!”. My recommendation with temperatures over 110F is water every day – and I did not follow my own advice – so I guess losing some bushes serves me right! I am a hard learner.

Early September is still HOT. We are still on our Summer Program of ½ strength fertilizer feeding and lots of water. Continue to Dead Head.

We are encouraging you to feel brave and start giving your bushes a light prune to help force some good blooms for the Arizona State fair coming in Mid October. Prune one stem per week through September. The schedule is on line, entries have to be post marked by Sept 28th http://azstatefair.com/Common/Files/Horticulture_2011.pdf.

As I started to peruse it I noticed a section on “Compost” – I guess I am going to take a gallon of my compost in and see what they think! If you play in your yard at all, it is worth perusing the schedule. As Mike pointed out at our last meeting – ALL of his fertilizer is paid for by prize money from the fair. I am fairly sure he will not be entering compost, so that leaves me a good chance to win!

I will endeavor to get the EXCEL spread sheet up to date and out before our general meeting on September 8th to make your entry a little simpler. Let’s fill the shelves with Roses

.Lynn sent out a great link to a video Tinsel Town Rose Society has put together on being a member of a rose society. It is very good and we should look at doing a spin from it.

http://www.youtube.com/watch?v=O4YVaxZuk9Q&feature=player_embedded

Do you want to escape the heat for a weekend: There is a Consulting Rosarian school being held Saturday September 24th, 2011. 8:00am to 5:00pm. Being hosted by Orange County Rose Society at the Westminster Community Center, 8200 Westminster Blvd, Westminster CA 92683. Contact info 949-362-271 crtom@cox.net. \$30 fee covers Breakfast and Lunch.

This is a great seminar for those new Rose growers who want a lot of basic questions answered. Plus a perfect opportunity for the veteran Rose grower to compare notes and pick up ideas from others.

The AZ Rose Societies will have a booth at the Home & Garden show taking place at the Phoenix Fair Grounds Friday September 30th – Sunday October 2nd. PLEASE donate a few hours to talk enthusiastically about growing Roses in the Valley. We will have sign up sheets at the general meeting. Jeannie Cochell jcochell@cox.net 602-363-6444, text preferred is coordinating the booth. You do not need to be a Rose Expert – the only requirement is to be enthusiastic about growing roses, if you are a novice we will ensure there is a CR with you.

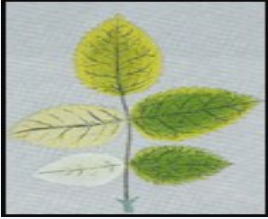
Summer is almost over – next month your Rose bushes will bounce back ready to give you those truly appreciative blooms in November.

Product Guide for Roses

by Mike Jepsen



Nutrient Deficiency in Roses – The Micronutrients Iron, Zinc, Manganese, Copper, Boron, Molybdenum



The symptoms of Iron deficiency are as follows:

1. Interveinal chlorosis of young leaves
2. Twig dieback
3. In severe cases, death of entire limbs or plants



The symptoms of Zinc deficiency are as follows:

1. New shoot growth aborted
2. Leaves are distorted
3. Decrease of stem length
4. Rosetting of terminal leaves
5. Mottled leaves (interveinal chlorosis)



The symptoms of Manganese deficiency are as follows:

1. Interveinal chlorosis – yellowing with smaller veins remaining green;
2. there is no sharp distinction between veins and interveinal areas



The symptoms of Copper deficiency are as follows:

1. Stunted growth
2. Wilting and eventual death of leaf tips
3. Young leaves develop light edges



The symptoms of Boron deficiency are as follows:

1. Death of terminal growth
2. Thickened, curled, wilted and chlorotic leaves
3. Leaves poorly developed/distorted
4. Flower petals may be shortened



The symptoms of Molybdenum deficiency are as follows:

1. Stunting/lack of vigor
2. Youngest growth shows some wilting
3. Weak flowers

ROSE CARE CORNER for September

by Phyllis Henslin, Consulting Rosarian



September Rose Care

With the arrival of September, I am sure both you and your roses are ready for some cooler temperatures. August was a brutal month with record temps that stressed our roses to the max. I am sure most of us will need to replace a rose or two that just didn't make it through the summer.

Now it's time to think about fall pruning. Generally it's best to start pruning around the 3rd or 4th week in September. Even though the days are starting to cool, you don't want to get started too soon or your roses may still suffer from heat stress. A good pruning plan is to start pruning the side of your bush that gets morning sun and leave the side that gets afternoon sun until October when our heat starts to subside.

If you have Bermuda grass that has invaded your garden, follow mixing directions and spray Fusillade on the grass.

During the summer, our roses form "candelabras" or multiple thin stems at the top of the bush. As you prune, remove $\frac{1}{4}$ to $\frac{1}{3}$ of the top of the bush to get below these candelabras. This will open up the bush and make room for new growth that will give you beautiful blossoms to enjoy the rest of the year. Also cut out any dead canes, spindly stems and blind shoots. Hybrid teas need pencil size or larger stems to support a good bloom. When pruning, cut about $\frac{1}{4}$ inch above a bud eye and choose a bud eye pointing away from the wall. Keep the leaves on the stems. We **do not** remove the leaves until the January pruning. When you are finished pruning, clean up the cuttings, dead leaves and add a layer of new mulch if needed.

You should have continued to fertilize your roses through the summer months with an organic fertilizer. If it's been four to six weeks since you last fertilized, feed them with Gro Ganic or Millorganite at the recommended rate. Go $\frac{1}{2}$ this rate for potted roses. Once temperatures have dropped for the season, we can start a more aggressive fertilization program using fish emulsion, foliar fertilizers, alfalfa meal and Epsom salts.

Continue to hose off your roses early in the day so you avoid creating a humid environment that may promote powdery mildew. Continue with your summer watering schedule. Once temps stay consistently below 100 degrees you may gradually reduce the amount of water.

The schedule for the MEVRS Rose & Photography Show is now available to be downloaded from the MEVRS Website. www.roses4az-mevrs.org

MEMBERSHIP

DISCOUNTS

The following nurseries will give MEVRS members a 10% discount (unless otherwise indicated) on any rose-related purchase when you show your membership card.

In some stores you must pay by cash or check

only to receive the discount.

Be sure to get your annual Membership Card from the Membership Chairman.

A & P Nurseries (15%)

Four Valley Locations

Gilbert, Mesa (2), Queen Creek

Berridge Nursery

4647 E. Camelback Rd Phx

Potted roses always in stock!

Gardener's World

3401 E. Baseline Rd., Phx

Harper's Nursery

Three locations:

Mesa, Scottsdale and Phx

480-964-4909 (Mesa)

Potted roses still in stock

Treeland Nursery

2900 S. Country Club Dr., Mesa

480-497-2525

When you patronize these businesses, please thank the manager for supporting the MEVRS!

Mesa East Valley Rose Society

Standing Monthly Activities

2nd Thursdays—7 p.m. General Meetings

3rd Saturdays—8 a.m. Rose Garden volunteers work

Jan & Feb ALL Saturdays MCC Garden

Pruning

Activities 2011

Monthly MEVRS Meetings

September 8, October 13,

November 10

Oct 13-16, 2011— Fall National Convention— Los Angeles

Tinseltown Rose Society

Nov 13 MEVRS Rose Tour

Nov.19 MEVRS Rose Show

CONSULTING ROSARIANS

Arveda Larson* (Scottsdale)	602-953-3832
Cheryl Doan	480-838-4062
Dave* & Gerry* Mahoney (Glndl/Peoria)	623-581-3756
Donna Dibble (East Mesa)	480-380-4592
Helen Baird* (NoPhx, Sctsdle)	602-953-9133
Jeannie Cochell (NE Valley—jcochell@cox.net)	602-363-6444
John F. Green (Tucson)	520-795-2964
Ken & Peggy Jones (West Phoenix)	623-931-5004
Larry Bell* (Ahwatukee Foothills)	480-706-9667
LeRoy Brady* (Mesa)	480-962-9603
Liz Strong (Tucson)	520-797-7890
Lynn Twitchell	480-202-4215
Marylou Coffman** (Gilbert)	480-926-3064
Mike & Cindy Jepsen (Tempe)	602-312-1813
Mickey Kundrat	602-359-8528
Millie Hisey* (Apache Jct-winter)	480-474-9139
Nelson Mitchell* (Peoria)	623-412-1586
Bill & Phyllis* Henslin (Mesa, Apache Jct)	480-807-3592
Royetta Marconi-Dooley	480-802-9914
Ryan Regehr (Chandler, Gilbert)	480-518-1529
Steve Sheard (Tempe, Chandler)	480-831-2609
Terry Schick (Flagstaff)	928-853-0653
Terry Swartz* (Tucson)	520-623-8285
Terry* & Heidi* Leavitt (Phoenix)	602-971-0179

*ARS Judge **ARS PSWD Chair of Arrangement Judges

Meetings are held at 7:00 pm on the 2nd Thursday
of each month at
Mesa Community College:
***Elsner Library Community Room, 1st
floor***

1833 W. Southern Ave., Mesa, AZ

***All articles for the newsletter MUST be
submitted to the editor by the 25th of each
month.***

***Rosarians, we could use all articles of
interest.***

WEB Pages of Interest

Mesa-East Valley Rose Society

www.roses4az-mevrs.org

OR

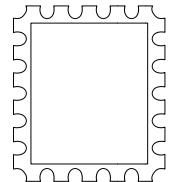
***http://www.roses4az-
mevrs.org/site/home.html***

Find past newsletters or articles by
clicking on the "Newsletters" or
"Articles" tabs on the Home page.

MCC Rose Garden

Rose Lore

Judy Sweador, Editor
Mesa-East Valley Rose Society Inc.
PO Box 40394
Mesa, AZ 85274-0394



***Developers of
The Rose Garden at Mesa Community College,
the largest public rose garden in
the Desert Southwest!***