

ROSE LORE

Written by members, for members of the
Mesa East Valley Rose Society

Judy Sweador, editor

www.roses4az-mevrs.com



NEPTUNE

Monthly Meeting: Mesa Community College (FREE PARKING)

Elsner Library—Community Room

1833 West Southern Ave. Mesa, AZ 85202

NEXT MEETING THURSDAY

February 9, 2010 at 7:00 PM

February program will be presented by Helen Baird

on drying roses

Photos provided by Bill and Phyllis Henslin



I am writing this a touch early because the next few weeks are going to be crazy. My garden is only 15% pruned, I still need to finish installing my new watering system, we are having wood flooring being put in the 4 main rooms of our home and I am travelling to Florida for a week. Just a little busy, I am sure I am not the only one.

By the time you get this the Rose Auction, Feb 4th, will be about on us or just over. With all the planning and it coming together I know it will be, or has been, a GREAT event. Thank you Ryan, and all your helpers, once again for a tremendous event.

We are into a new year and an opportunity to expand our gardening knowledge and share our love of roses with more people. Some have already being hard at work with helping to man the Rose Society booth at the Home & Garden show in January and others have been helping to talk roses while they prune at the MCC Rose Garden. I hosted at rose growing class at the Desert Botanical Garden that was attended by 22 people, some of them came down to the garden to prune. A very special thank you to Jeannie Cochell for organizing the H&G show.

We still need EVERYONES help with our pruning marathon at the Mesa Community College Rose Garden. We need to do our part for the college in return for what they do for us (Meeting Rooms, Store Room etc – Our Rose Shows and Auctions have been a success because of the support we get from the college). Do not be the face we did not see! Consulting Rosarians – take note.

..... If you are unsure about pruning your bushes at home, this is an ideal time to bring your questions. We will have demonstrations by a Consulting Rosarian every Saturday through February at 8:30am.

We are coming up to election time for the officers of the board. First we will pull together a Nominating Committee. We are always interested in having someone new join us and provide a different perspective. If you are interested in either being on the nominating committee or running for the board, please speak to any of the current board members.

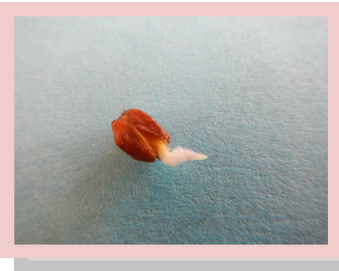
A Thank You to all those that have answered a Rose Question, be it at a rose growing class, or just a co-worker, it all helps to promote our National Flower, the Rose and rose growing here in Arizona. I was sent an unusual picture of a rose flower with LEAVES growing out the center. We get this occasionally when we over fertilize.

Regards

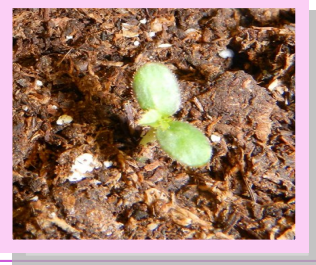
Steve Sheard



The Rose Cuttings you took home from the last meeting should be showing signs of growing



I planted some out last week and now have a rose seedling.



Those who took Rose seeds home, from our meeting last September and put them into the refrigerator should taking them out, as they will be ready to sprout.

ROSE CARE CORNER for February

by Phyllis Henslin, Consulting Rosarian



February Rose Care

Spring Pruning: Try and finish your spring pruning by the middle of the month. After you finish pruning and have all the leaves stripped, clean up all the canes and leaves and throw them away. Do not leave the cuttings and old leaves for mulch as they can contain disease spores and insects.

Spraying: Spray the soil with an insecticide to kill any insects that are wintering below the soil surface. Spray the canes with a fungicide to help prevent mildew. These preventive measures will help save you work and frustration later on.

Fertilizer: Apply an organic fertilizer such as Gro Ganic (which our society sells) around your bushes. Apply 2 cups of organic fertilizer and ½ cup of Alfalfa Meal to each large established bush. For roses in pots, use ½ the rate for each potted rose. ½ cup Epson salts can be applied this month to each large bush and ½ rate for potted roses to help promote new basal breaks. Milorganite is another organic fertilizer that many use. It can be found in Home Depot. Remember: Always water before and after applying fertilizer to your roses.

Irrigation & mulch: Now is the time to make sure your irrigation system and emitters are working properly and make necessary repairs. As the temperatures start to increase, adjust your watering schedule accordingly. Adding new mulch to your rose bed is much easier now before they start putting out new growth and you have the chance of breaking the new growth off. During the month of February you may purchase mulch at the MCC Rose Garden. Each year Ken Singh Farms provides mulch for the Rose Garden at MCC and all money from the sale of this mulch helps maintain the Rose Garden.

Planting: Bare root roses can still be planted in February. Be sure and immerse them in water for at least 24 hours before planting to hydrate them. If you have bare root roses that are slow in leafing out, cover them with wet mulch and put a brown paper bag around the mulch to hold it in place. This process should help the buds immerse. Once they are growing nicely, gently wash the mulch away .



Paul Loverin was busy sharpening pruners in the Rose Gar-



It's time for coffee and donuts and bagels.



Volunteers busy pruning roses in Phase 4



Jean Pegler pruning miniature roses in the MCC Rose Garden.



Long sleeved garden gloves and pruners are for sale in the Rose Garden. Phyllis Burgess will help

ROSE OF THE MONTH
BY
MARYLOU COFFMAN

DICK CLARK

This is one of the most beautiful Grandiflora roses to come on the market in a long time. It is a cream and cherry blushed burgundy. No two blooms are alike. Black red buds spiral open to show off swirls of cream edged, washed with vibrant cherry pink. Blooms are 4-5 inches across and it has 25-30 petals. As the bloom opens, the petals blush burgundy and finish a deep dark red. A beautiful , colorful display. It has nice long stems for cutting and bringing into the house, for sharing with a friend or neighbor or taking to one of our Spring Rose Shows.

It has single blooms as well as great sprays.



It has wonderful dark shiny green foliage. It is very vigorous and easy to grow. This comes from it parentage, Fourth of July and unknown seedling.

It is a tall upright bush growing around 5-6 feet tall.

It has a moderate cinnamon spice fragrance.

It was hybridized by Tom Carruth and Christian Bedard of Weeks Roses.

This rose was grown in test gardens throughout the Country for over two years and won the coveted AARS Award.

This rose grows very well in our hot, dry summers. The colors are more vibrant in cooler weather, but if you want a rose for a spectacular show of color, this is the one.

This rose is the 11th All America Selection winner for Weeks Roses and it is one of the best.

It can be found at most of the local nurseries and from most of the on-line nurseries.

ROOTING ROSES: *Selecting & Preparing the Cutting*

Hardwood cuttings are taken in the Fall. **Softwood** rooting is available when you see the bloom. A stem with a spent flower is desirable, but a stem with a bud with no color showing is probably too young. However, **ANY** time I find a good stem (regardless of time of year) I try to root it knowing that success rate goes down as temperature rises.

Always use cuttings that are fresh. In selecting a cutting, look for a straight stem with **heel wood** (see picture) which is that part of the cane with much bud material and therefore roots most easily. Cut right up against the main cane. Using pruning shears, cut a 4- to 6-inch length of stem, making sure the cutting has at least 4 five-leaflet leaves with bud eyes in the leaf axil. If the cutting is short because of the tight spacing between the leaflets, prepare a cutting with five bud eyes and leaves. The top two 5-leaflet leaves remain on the stem/cutting and the 2 or 3 lower leaves are removed, being careful not to damage the bud eyes in the leaf axil. Trim the cutting about $\frac{1}{4}$ inch above the top-most leaf stalk/bud eye. Shorten large leaves by clipping off the terminal leaflet. Follow the same method when preparing the cutting without **heel wood** but trim the cutting $\frac{1}{4}$ inch below the lowest bud eye.

Next, remove all thorns from the bottom half of the stem and "wound" it using your thumbnail or a knife to scrape 2 thin strips of bark (green layer) from the bottom $\frac{1}{2}$ inch of the stem saving any bud eyes. Dip this end of the stem in rooting hormone, place half its length into the moist (not wet) soil in a 16oz foam cup with 4 holes cut at the bottom (for roots to show) or a transparent plastic cup where developing roots will be visible, and pack the soil around the cutting. Place foam cup with the cutting into a 16oz or so container, cover with quart-size plastic bag to provide needed moisture and place in bright light but not direct sun. New growth (from bud eyes) may appear in 8 days or may take more than 3 months. As soon as you see roots sticking out of the holes at the bottom of the cup, it is time to transfer the rooted cutting into 1gal pot very, very carefully.

*Always try to take the new year's growth right down to where it attaches to last year's cane. The **heel wood** is a part of the cane that roots most easily.*



Paul Barden

That is success !!

Rita Tall (ritatall@comcast.net, phone: (520) 615-4989)

11th Annual Real Gardens for Real People Tour

Presented by

University of Arizona Cooperative Extension Maricopa County Master Gardeners

Tours of North Scottsdale gardens include 27 on-site gardening experts

On March 31, 2012, the 11th annual Real Gardens For Real People tour takes place in north Scottsdale. Self-guided tours take participants through six private residential gardens as well as a newly developed school garden in partnership with the students of Copper Ridge Elementary School and the Master Gardeners. Consistent with the primary mission of Master Gardeners, over 27 leading gardening experts will be on-site to educate and answer questions from tour participants.

The comprehensive labeling of plants in the gardens on the tour – both botanical and common names – and the program of educational experts sets this garden tour apart. Topics include composting, garden color, metal art work, rainwater harvesting, citrus and palm care, square foot gardening, cacti and succulents, herbs, wildflowers, drip irrigation and water harvesting, pruning, container gardening and butterflies, bees and wildlife in gardens.

These gardens are inspiring and imaginative, using the principles of Master Gardeners to select, place and care for plants in an environmentally responsible manner based on research specific to the low desert. The gardens also feature water attractions, edible landscapes, recycled art, metal sculptures and mosaics, many hand crafted by the garden owners.

WHAT: The **Real Gardens for Real People Tour** provides self-guided tours of six private residential gardens located in north Scottsdale as well as a newly developed school garden at Copper Ridge Elementary School. This annual private garden tour is organized by the Master Gardeners trained by the University of Arizona Cooperative Extension program.

WHEN: **Saturday, March 31, 2012** from 9:00 a.m. to 4 p.m.

WHERE: North Scottsdale – Tour Guides can be collected at **the Copper Ridge Elementary School located at 10101 E. Thompson Peak Parkway, Scottsdale, AZ 85255**

TICKETS: \$25 advance tickets available online at cals.arizona.edu/maricopa/garden/gardentour and at 24 nurseries and other merchants across the valley. \$30 tickets are available on tour day at Copper Ridge Elementary School.

INTERVIEWS/PHOTO OPS: Interviews with garden owners, gardening experts, and Education Committee Chair, Kris Christensen, can be arranged. Preview photos of the gardens also available.

Affiliated with the National Rose Society
Mesa-East Valley Rose Society
Executive Officers



President	Steve Sheard
1st Vice President	Lynn Urry
2nd Vice-President	Vincent Quarles
Recording Secretary	Carol Hurlbut
Corresponding Secretary	Michael Levitt
Treasurer	Jean Urry
Past-President	LeRoy Brady

Board of Directors

Lynn Twitchell
Jimmy Tribby
Bill Henslin
Linda Ahlborn

Standing Committees

Auction Chairman.....	Ryan Regehr	480-518-1529
Communications	Open	
Historian.....	Open	
Hospitality	Sally Crofford	480-838-9497
Librarian.....	Linda Ahlborn	480-695-5891
Membership	Vincent Quarles	480-786-3383
Newsletter Editor ..	Judy Sweador (judysw@cox.net)	480-969-5490
Member Emails.....	Linda Ahlborn	480-695-5891
MCC Test Garden.....	LeRoy Brady	480-962-9603
	Marylou Coffman	480-926-3064
Pioneer Park Rose Garden Coordinator	Jean Pegler	480-969-9391
Publicity	Open	
Rose Garden Volunteers.....	Open	
Rose Show Chairman.....	Mary Lou Coffman &...	480-926-3064
	Phyllis Henslin	480-807-3592
Volunteer Coordinator.....	Open	
Ways & Means.....	Mike Jepsen	602-312-1813
Web Site.....	Corinne Geertsen	480-649-9822

Mesa–East Valley Rose Society Membership

Annual family or individual membership is \$25. Annual dues are payable by June 1.

Payments in cash or check at a meeting; or by check to this address:

MEVRS/Membership, P.O. Box 40394, Mesa, AZ 85274-0394

Date _____ New _____ *Gift* _____ Renewal _____ Amount Paid _____

Cash _____ Check# _____

Names: _____ Telephone # : _____

Street Address: _____

City State Zip: _____

E-mail address: _____

Lost and Found

A jacket was left on a chair at the January MEVRS Society meeting. It can be picked up at the February meeting.

WEB Pages of Interest

Mesa-East Valley Rose Society

www.roses4az-mevrs.org

OR

<http://www.roses4az-mevrs.org/site/home.html>

Find past newsletters or articles by clicking on the “Newsletters” or “Articles” tabs on the Home page.

MCC Rose Garden

www.rosegardenatmcc.org

Help Me Find Roses

www.helpmefind.com/rose

Zone Finder

enter: <http://www.garden.org/zipzone/>

CONSULTING ROSARIANS

Cheryl Doan	480-838-4062
Dave* & Gerry* Mahoney (Glndl/Peoria)	623-581-3756
Helen Baird* (NoPhx, Sctsdle)	602-953-9133
Jeannie Cochell (NE Valley—jcochell@cox.net)	602-363-6444
LeRoy Brady* (Mesa)	480-962-9603
Liz Strong (Tucson)	520-797-7890
Lynn Twitchell* (Gilbert)	480-202-4215
Marylou Coffman** (Gilbert)	480-926-3064
Mike & Cindy Jepsen (Tempe)	602-312-1813
Mickey Kundrat (Gilbert)	602-359-8528
Millie Hisey* (Apache Jct-winter)	480-474-9139
Nelson Mitchell* (Peoria)	623-412-1586
Bill * & Phyllis* Henslin (Mesa, Apache Jct)	480-807-3592
Royetta Marconi-Dooley (Sun Lakes, Chandler)	480-802-9914
Ryan Regehr (Chandler, Gilbert)	480-518-1529
Steve Sheard (Tempe, Chandler)	480-831-2609
Terry Swartz* (Tucson)	520-623-8285
Terry* & Heidi* Leavitt (Phoenix)	602-971-0179

*ARS Judge **ARS PSWD Chair of Arrangement Judges

MEMBERSHIP

DISCOUNTS

The following nurseries will give MEVRS members a 10% discount (unless otherwise indicated) on any rose-related purchase when you show your membership card.

In some stores you must pay by cash or check

only to receive the discount.

Be sure to get your annual Membership Card from the Membership Chairman.

A & P Nurseries (15%)

Four Valley Locations

Gilbert, Mesa (2), Queen Creek

Berridge Nursery

4647 E. Camelback Rd Phx

Potted roses always in stock!

Gardener's World

3401 E. Baseline Rd., Phx

Harper's Nursery

Three locations:

Mesa, Scottsdale and Phx

480-964-4909 (Mesa)

Potted roses still in stock

Treeland Nursery

2900 S. Country Club Dr., Mesa

480-497-2525

When you patronize these businesses, please thank the manager for supporting the

MEVRS!

Mesa East Valley Rose Society

Standing Monthly Activities

2nd Thursdays—7 p.m. General Meetings

3rd Saturdays—8 a.m. Rose Garden volunteers work

Jan & Feb ALL Saturdays MCC Garden

Pruning. We could use your help!!!

Upcoming Events

9 February program will be presented by Helen Baird – drying roses

10 March program will be presented by Lynn Urry – getting kids involved with growing/showing roses. Please bring your grandchildren to the meeting.

7 April Glendale Rose Show

14 April Scottsdale Rose Show

21 April MEVRS Garden Tour

22 April Phoenix Rose Show

SAVE THE DATES FOR 2012

Feb 4, 2012— MEVRS Rose Auction

Feb. 11, 2012 Las Vegas hosting

Two for One seminar

March 31, 2012, 9:00a.m.-4:00p.m.

Real Gardens for Real People **THE WEST VALLEY ROSE SOCIETY**

Meetings are held at 7:00 pm on the 2nd Thursday
of each month at
Mesa Community College:
Elsner Library Community Room,
1st floor

1833 W. Southern Ave., Mesa, AZ

*All articles for the newsletter
MUST be submitted to the editor by
the 25th of each month.*

judysw@cox.net

*Members, we could use all articles
of interest.*

WEB Pages of Interest

Mesa-East Valley Rose Society

www.roses4az-mevrs.org

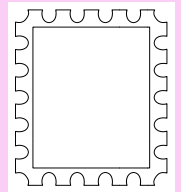
OR

<http://www.roses4az-mevrs.org/site/home.html>

Find past newsletters or articles by
clicking on the "Newsletters" or
"Articles" tabs on the Home page.

Rose Lore

Judy Sweador, Editor
Mesa-East Valley Rose Society Inc.
PO Box 40394
Mesa, AZ 85274-0394



*Developers of
The Rose Garden at Mesa Community College,
the largest public rose garden in
the Desert Southwest!*